

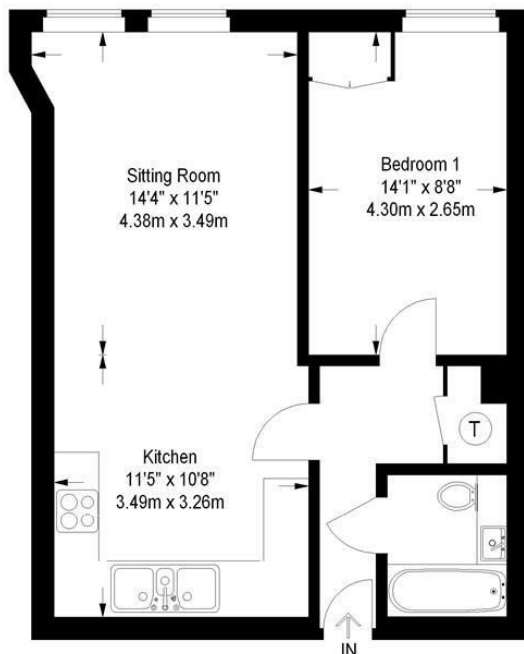
6 Montpellier Terrace Apartments

Montpellier Terrace Cheltenham Gloucestershire GL50 1AF

readmaurice 



A WELL PRESENTED ONE BEDROOM GROUND FLOOR APARTMENT SET WITHIN THIS MODERN DEVELOPMENT THAT WILL BE FOUND IN GOOD DECORATIVE ORDER AND WITH PARKING, A SHORT DISTANCE FROM MONTPELLIER.



Approximate Gross Internal Area = 506 sq ft / 47 sq m

Illustration for identification purposes only, measurements are approximate and are not to scale.
Please check all details before making any decisions reliant upon them.
Copyright Read Maurice. (ID85880)

Montpellier Apartments is a modern development of striking modern apartments and is conveniently located on the edge of Montpellier & the Bath Road in Cheltenham. The apartment is well designed and has a large open plan sitting room and a fully fitted kitchen with integrated appliances.

The bedroom is of a generous size and there is a smart bathroom. The apartment is offered on an unfurnished basis.

ACCOMMODATION:

Open plan sitting/dining room, fitted kitchen, 1 double bedroom and modern appointed bathroom.

PARKING:

Allocated underground parking.

ADDITIONAL:

Electric heating.
Double glazed windows.
Unfurnished.

INCLUDED:

Electric hob, oven, dishwasher, fridge, freezer and washing machine.

TERM

12 months minimum term. No pets. No smokers.

GENERAL:

Mains services are believed to be connected excluding gas.

VIEWING AND SHOWING TIMES:

Read Maurice show our rental property during weekdays only. No application may be made without a physical viewing of the property. For certain properties block viewings will be offered and you are advised to attend at the earliest opportunity if this property is of interest to you.

Local Authority: Cheltenham Borough Council

Council Tax: B

EPC: Band D

Rating: 64

readmaurice 

48 Andover Road, Cheltenham, GL50 2TL

Tel: 01242 241122

Email: post@readmaurice.co.uk

www.readmaurice.co.uk

6 Montpellier Terrace Apartments Montpellier Terrace Cheltenham Gloucestershire GL50 1AF

These particulars, whilst believed to be accurate are set out as a general outline only for guidance and do not constitute any part of an offer or contract. Intending purchasers should not rely on them as statements or representation of fact, but must satisfy themselves by inspection or otherwise as to their accuracy. We have not carried out a detailed survey nor tested the services, appliances and specific fittings. Room sizes should not be relied upon for carpets and furnishings. The measurements given are approximate. No person in this firm's employment has the authority to make or give any representation or warranty in respect of the property. Purchasers should not rely on room labels they are chosen by the floor planner and may not have the deemed planning consent for such use.