



15 Farmington Road, Benhall, Cheltenham GL51 6AG

15 Farmington Road, Benhall, Cheltenham GL51 6AG



A traditional three-bedroom semi-detached family home located on a tree lined grass verged road west of central Cheltenham. The property has easy access to facilities and is available on a long term basis.



The accommodation comprises, entrance hall, sitting room, dining room, kitchen, utility room, cloakroom, landing, three bedrooms, bathroom and separate WC. 61'x28' enclosed rear garden. The property is well presented throughout and features central heating to radiators and double glazed windows.

ACCOMMODATION

Entrance hall
Two reception rooms
Kitchen, utility and cloakroom
3 bedrooms
Bathroom & separate WC

PARKING

Off street

ADDITIONAL

Gas fired central heating to radiators
Double glazed windows
Unfurnished

INCLUDED

Gas oven

TERM

12 months minimum term.
No pets, No smokers. No sharers

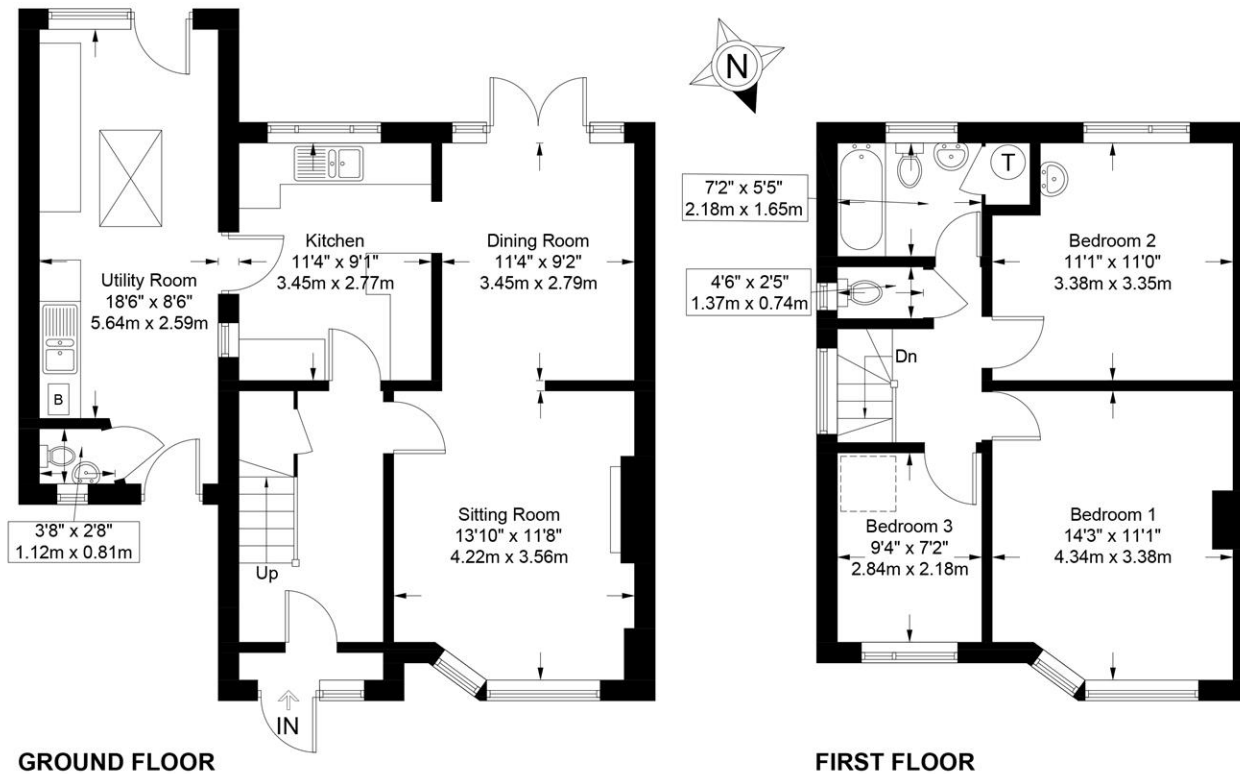
GENERAL:

Services: All mains services are believed to be connected.
Local Authority: Cheltenham Borough Council.
Council Tax: Band D
EPC: D (60/84)

VIEWING AND SHOWING TIMES:

Read Maurice show our rental property during weekdays only. No application may be made without a physical viewing of the property. For certain properties block viewings will be offered and you are advised to attend at the earliest opportunity if this property is of interest to you.





15 Farmington Road, Benhall, Cheltenham GL51 6AG
 Approximate Gross Internal Area 1147 sq ft / 106.6 sq m

These particulars, whilst believed to be accurate are set out as a general outline only for guidance and do not constitute any part of an offer or contract. Intending purchasers should not rely on them as statements or representation of fact, but must satisfy themselves by inspection or otherwise as to their accuracy. We have not carried out a detailed survey nor tested the services, appliances and specific fittings. Room sizes should not be relied upon for carpets and furnishings. The measurements given are approximate. No person in this firm's employment has the authority to make or give any representation or warranty in respect of the property. Purchasers should not rely on room labels as they are chosen by the floor planner and may not have the deemed planning consent for such use.

readmaurice 

48 Andover Road, Cheltenham GL50 2TL
 Tel: 01242 241122
 Email: post@readmaurice.co.uk
www.readmaurice.co.uk