



14 Alstone Croft, Cheltenham, Gloucestershire GL51 8HA

14 Alstone Croft, Cheltenham, Gloucestershire GL51 8HA

A three bedroom period end terraced house require general refurbishment and improvement. Comprising, entrance hall, two reception rooms, kitchen, rear lobby, ground floor bathroom and three first floor bedrooms, 46' rear garden. Central heating & double glazing. Chain free sale.





A opportunity to renovate a period town house with well-proportioned accommodation arranged over two floors.

To the ground floor is a entrance hall with stairs rising to the first floor. To the front of the property is a sitting room and to the rear is a dining room off which is a kitchen with a good range of units. Beyond the kitchen is a rear lobby with door to the rear garden and a ground floor bathroom.

Upstairs there is a landing off which are three bedrooms.

To the rear is a c.46'x13' enclosed rear garden. The property requires general updating and refurbishment and features double glazed windows and gas fired central heating to radiators.

General

Services: All mains services are believed to be connected.

Local Authority: Cheltenham Borough Council.

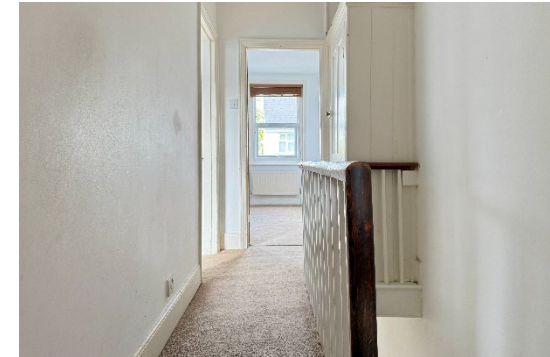
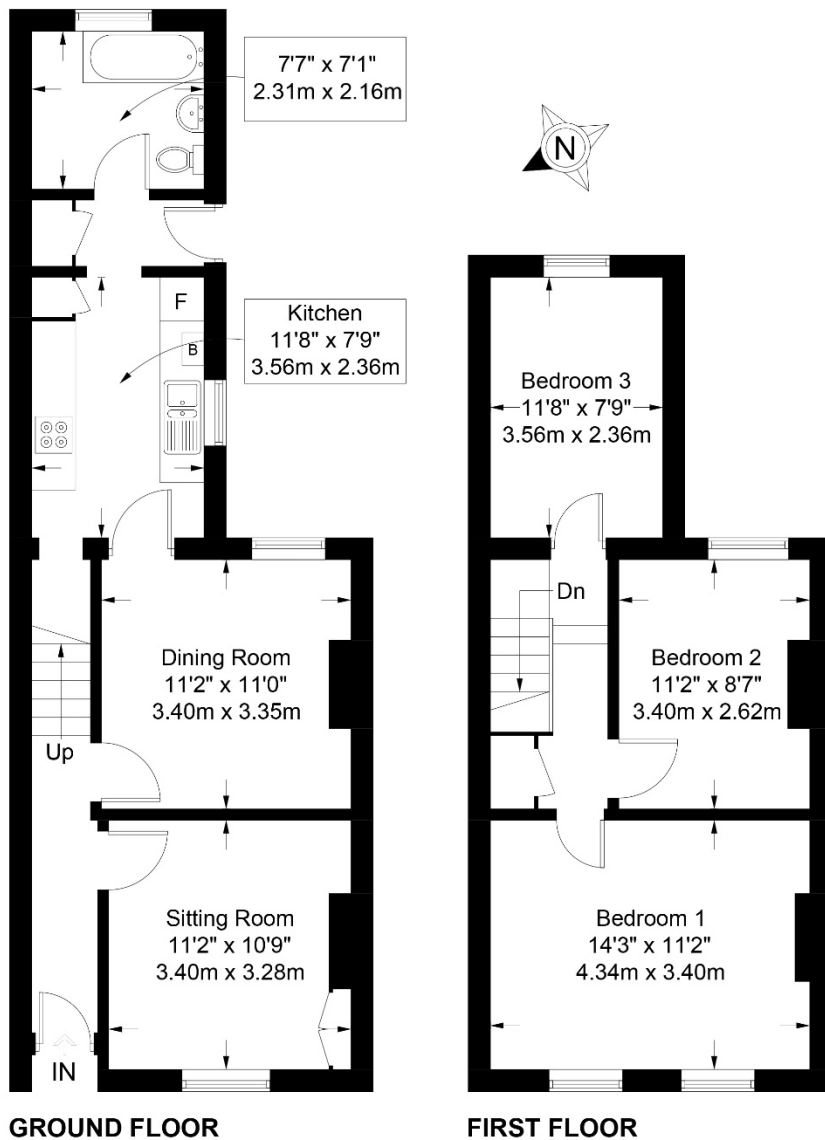
Council Tax: Band C

EPC: D (60/85)

Parking: On street car parking.

Title Number: GR 157737





14 Alstone Croft, Cheltenham, Gloucestershire GL51 8HA

Approximate Gross Internal Area 926 sq ft / 86.1 sq m

These particulars, whilst believed to be accurate are set out as a general outline only for guidance and do not constitute any part of an offer or contract. Intending purchasers should not rely on them as statements or representation of fact, but must satisfy themselves by inspection or otherwise as to their accuracy. We have not carried out a detailed survey nor tested the services, appliances and specific fittings. Room sizes should not be relied upon for carpets and furnishings. The measurements given are approximate. No person in this firm's employment has the authority to make or give any representation or warranty in respect of the property. Purchasers should not rely on room labels as they are chosen by the floor planner and may not have the deemed planning consent for such use.

readmaurice 

48 Andover Road, Cheltenham GL50 2TL
 Tel: 01242 241122
 Email: post@readmaurice.co.uk
www.readmaurice.co.uk