

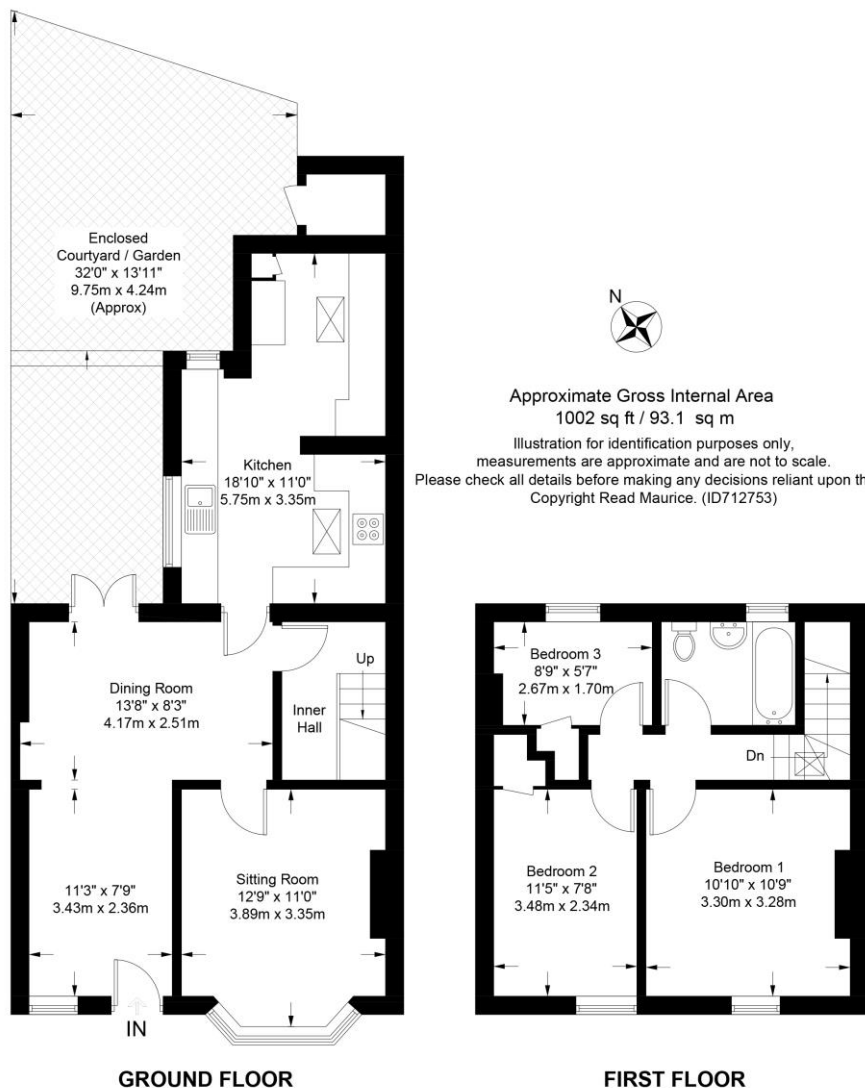
3 Bethesda Street

Leckhampton, Cheltenham, Gloucestershire, GL50 2AY

readmaurice 



A stylish period townhouse set moments from the Bath Road, The Suffolk's and Montpellier which offers a spacious ground floor, fully fitted kitchen and three bedrooms



If you are looking for a highly convenient location, Leckhampton address and a period property that offers 3 bedrooms thus townhouse might just be the answer. Bethesda Street is located between the Bath Road and Great Norwood Street and a level walk to Montpellier.

On entering the property an open plan L-shaped reception room has double doors opening onto the private courtyard garden. The 18' kitchen is fully fitted has integrated appliances and the added bonus of a separate utility area.

On the first floor are 3 bedrooms and family bathroom. The property has double glazing and gas central heating.

Garden: 32' x 13'11 (approx.) Private, enclosed courtyard with a raised decked area and a small storage shed.

Parking: The property is located in a residential parking area.

General

Services: All main services are believed to be connected

Local Authority: Cheltenham Borough Council

Council Tax: Band C

EPC: D - 64

360° Tour: Please visit our website and take the 360° immersive virtual tour of this property.



3 Bethesda Street Leckhampton, Cheltenham, Gloucestershire, GL53 2AY
Approximate Gross Internal Area 1002 sq ft / 93.1 sq m

These particulars, whilst believed to be accurate are set out as a general outline only for guidance and do not constitute any part of an offer or contract. Intending purchasers should not rely on them as statements or representation of fact, but must satisfy themselves by inspection or otherwise as to their accuracy. We have not carried out a detailed survey nor tested the services, appliances and specific fittings. Room sizes should not be relied upon for carpets and furnishings. The measurements given are approximate. No person in this firm's employment has the authority to make or give any representation or warranty in respect of the property.

readmaurice 

48 Andover Road, Cheltenham GL50 2TL

Tel: 01242 241122

Email: post@readmaurice.co.uk

www.readmaurice.co.uk