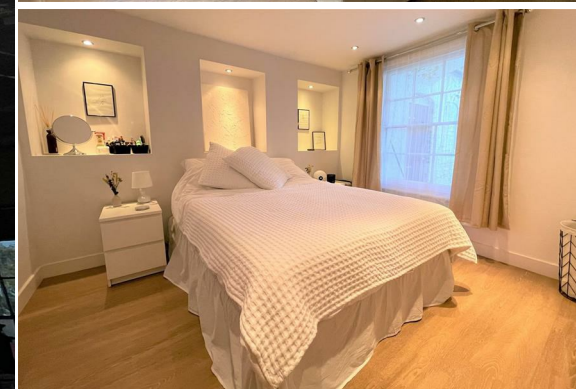


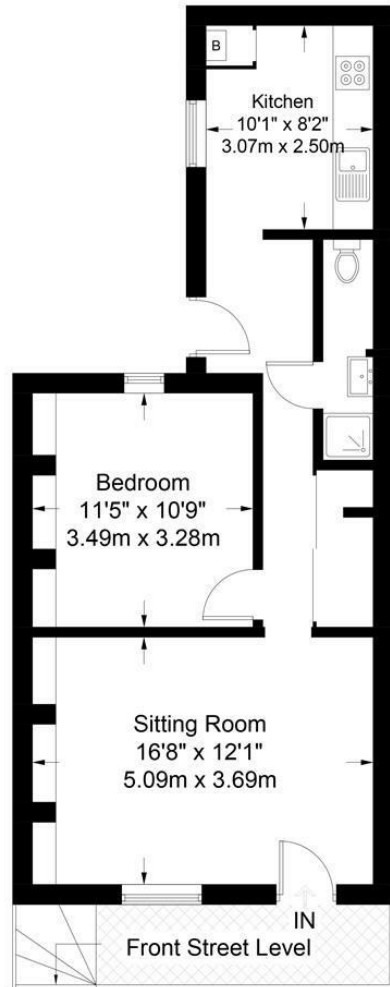
Basement Flat

15 Great Norwood Street, Cheltenham, Gloucestershire GL50 2AW

readmaurice 



A PERIOD ONE BEDROOM LOWER GROUND FLOOR APARTMENT SET IN THIS FASHIONABLE AREA OF THE SUFFOLK'S. IT HAS ITS OWN PRIVATE ENTRANCE AND A GENEROUS SITTING ROOM. KITCHEN LARGE. OFFERED ON AN UNFURNISHED BASIS.



Approximate Gross Internal Area = 554 sq ft / 51.5 sq m

Illustration for identification purposes only, measurements are approximate and are not to scale.
Please check all details before making any decisions reliant upon them.
Copyright Read Maurice. (ID464137)

ACCOMMODATION:

Sitting room
Shower room
Kitchen
Double bedroom
Single occupancy only

PARKING:

On street parking with permit - Suffolks Zone 8

ADDITIONAL:

Gas fired central heating
Wooden sash windows
Unfurnished

INCLUDED:

Gas hob
Electric oven
Undercounter fridge
Washing machine

TERM

12 months minimum term. No smokers. No pets.

Mains services are believed to be connected - Mains gas is on a sub meter to the house above so you will be billed on usage from 15 Great Norwood Street.

VIEWING AND SHOWING TIMES:

Read Maurice show our rental property during weekdays only. No application may be made without a physical viewing of the property. To assist with long distance travel there maybe a 360° virtual tour available to view online. For certain properties block viewings will be offered and you are advised to attend at the earliest opportunity if this property is of interest to you.

General

Local Authority: Cheltenham Borough Council

Council Tax: A

EPC: Band D

Rating: 57

Basement Flat, 15 Great Norwood Street, Cheltenham, Gloucestershire GL50 2AW

These particulars, whilst believed to be accurate are set out as a general outline only for guidance and do not constitute any part of an offer or contract. Intending purchasers should not rely on them as statements or representation of fact, but must satisfy themselves by inspection or otherwise as to their accuracy. We have not carried out a detailed survey nor tested the services, appliances and specific fittings. Room sizes should not be relied upon for carpets and furnishings. The measurements given are approximate. No person in this firm's employment has the authority to make or give any representation or warranty in respect of the property. Purchasers should not rely on room labels they are chosen by the floor planner and may not have the deemed planning consent for such use.

readmaurice

48 Andover Road, Cheltenham, GL50 2TL

Tel: 01242 241122

Email: post@readmaurice.co.uk

www.readmaurice.co.uk