



Flat 6 Christchurch Court, 77 Christchurch Road, Cheltenham GL50 2PZ

Flat 6 Christchurch Court, 77 Christchurch Road, Cheltenham GL50 2PZ



A well-proportioned two bedroom first floor flat, with lift access, forming part of this purpose built block. Entrance hall, sitting room, kitchen, bathroom, two bedrooms and a garage. Shared gardens.



ACCOMMODATION:

Entrance hall, sitting room, kitchen, 2 bedrooms and bathroom. Garage (in block)

ADDITIONAL:

Gas fired central heating to radiators.
Unfurnished.
No sharers, smokers or pets.

PARKING:

Un-allocated parking on the development & garage.

INCLUDED:

Gas cooker.
Washing machine..
Refrigerator/freezer.

TERM:

12 months minimum.

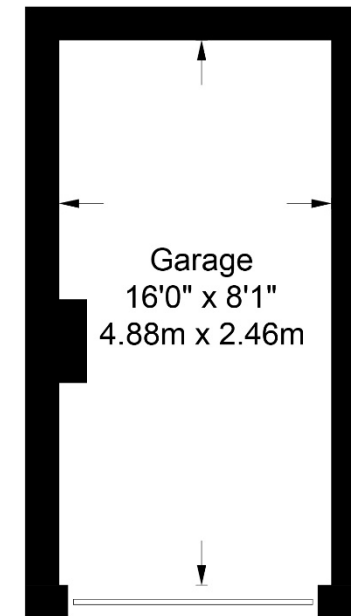
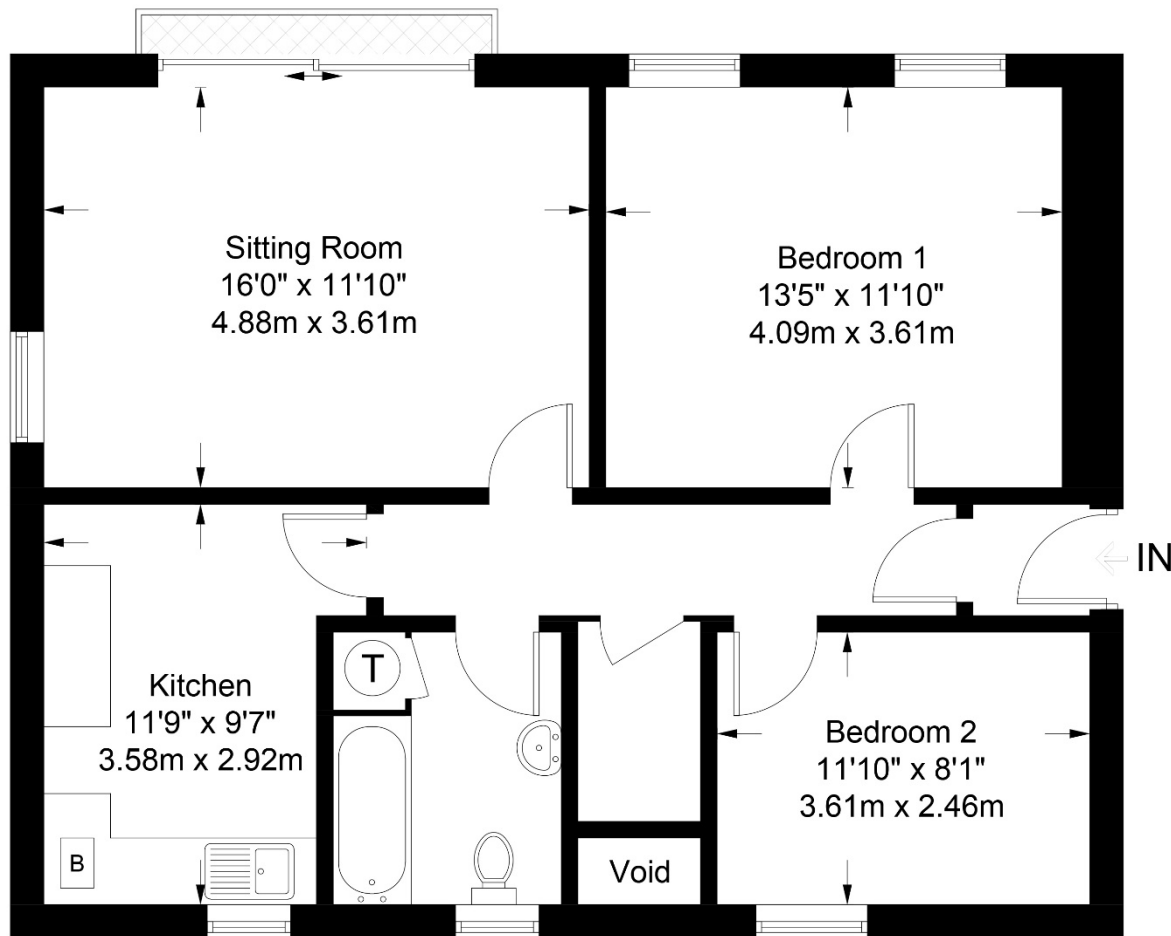
AVAILABLE:

Now

GENERAL

Services: All mains services are believed to be connected.
Local Authority: Cheltenham Borough Council.
Council Tax: Band C
EPC: C (77/80)
Parking: Unallocated on site plus a GARAGE.





(NOT SHOWN IN ACTUAL
LOCATION / ORIENTATION)



Flat 6 Christchurch Court, 77 Christchurch Road, Cheltenham GL50 2PZ
Approximate Gross Internal Area 738 sq ft / 68.6 sq m

These particulars, whilst believed to be accurate are set out as a general outline only for guidance and do not constitute any part of an offer or contract. Intending purchasers should not rely on them as statements or representation of fact, but must satisfy themselves by inspection or otherwise as to their accuracy. We have not carried out a detailed survey nor tested the services, appliances and specific fittings. Room sizes should not be relied upon for carpets and furnishings. The measurements given are approximate. No person in this firm's employment has the authority to make or give any representation or warranty in respect of the property. Purchasers should not rely on room labels as they are chosen by the floor planner and may not have the deemed planning consent for such use.

readmaurice

48 Andover Road, Cheltenham GL50 2TL
Tel: 01242 241122
Email: post@readmaurice.co.uk
www.readmaurice.co.uk