



24 Dagmar Road, Tivoli, Cheltenham GL50 2UG



24 Dagmar Road, Tivoli, Cheltenham GL50 2UG



Located in a popular residential district this town house has been recently modernised and updated and comprises two reception rooms kitchen, lobby bathroom, two bedrooms and an enclosed rear garden.



The accommodation is arranged over two floors and the ground floor is a entrance hall, front sitting room rear room, modern kitchen, lobby and bathroom. Upstairs there are two double bedrooms. Outside to the rear is a mature enclosed garden (c.48'x16' maximum). The property is well presented throughout and features central heating to radiators and double glazed windows.

#### ACCOMMODATION

Entrance hall  
Front sitting room  
Rear room  
Kitchen, lobby & bathroom  
2 double bedrooms

#### PARKING

On street

#### ADDITIONAL

Gas fired central heating to radiators  
Double glazed windows  
Unfurnished

#### INCLUDED

Oven & hob

#### TERM

12 months minimum term.  
No pets, No smokers. No sharers

#### GENERAL:

Services: All mains services are believed to be connected.  
Local Authority: Cheltenham Borough Council.  
Council Tax: TBC  
EPC: D (62/77)

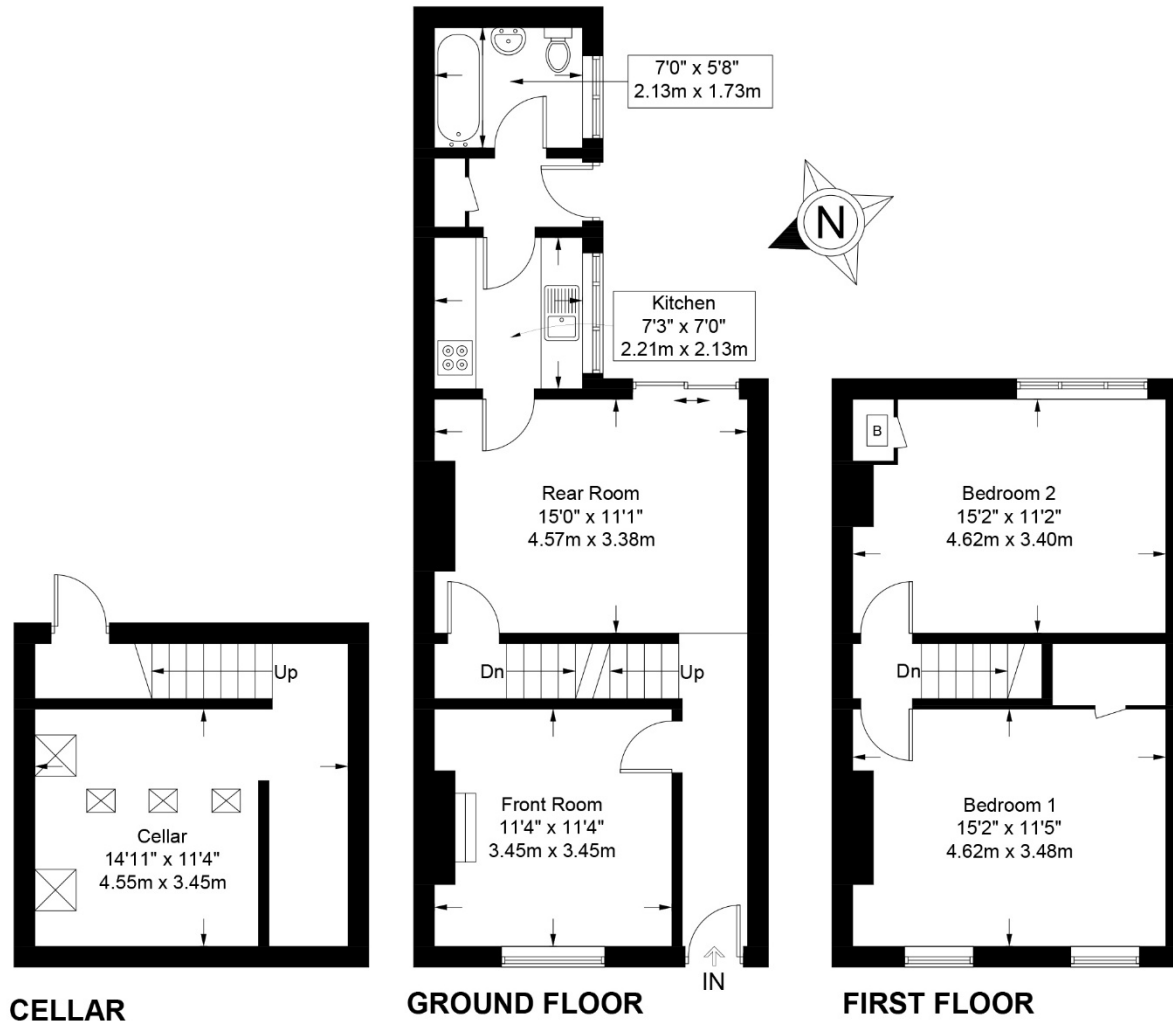
#### VIEWING AND SHOWING TIMES:

Read Maurice show our rental property during weekdays only. No application may be made without a physical viewing of the property. For certain properties block viewings will be offered and you are advised to attend at the earliest opportunity if this property is of interest to









**24 Dagmar Road, Tivoli, Cheltenham GL50 2UG**  
Approximate Gross Internal Area 1126 sq ft / 104.6 sq m

These particulars, whilst believed to be accurate are set out as a general outline only for guidance and do not constitute any part of an offer or contract. Intending purchasers should not rely on them as statements or representation of fact, but must satisfy themselves by inspection or otherwise as to their accuracy. We have not carried out a detailed survey nor tested the services, appliances and specific fittings. Room sizes should not be relied upon for carpets and furnishings. The measurements given are approximate. No person in this firm's employment has the authority to make or give any representation or warranty in respect of the property. Purchasers should not rely on room labels as they are chosen by the floor planner and may not have the deemed planning consent for such use.

**readmaurice**

48 Andover Road, Cheltenham GL50 2TL  
Tel: 01242 241122  
Email: [post@readmaurice.co.uk](mailto:post@readmaurice.co.uk)  
[www.readmaurice.co.uk](http://www.readmaurice.co.uk)