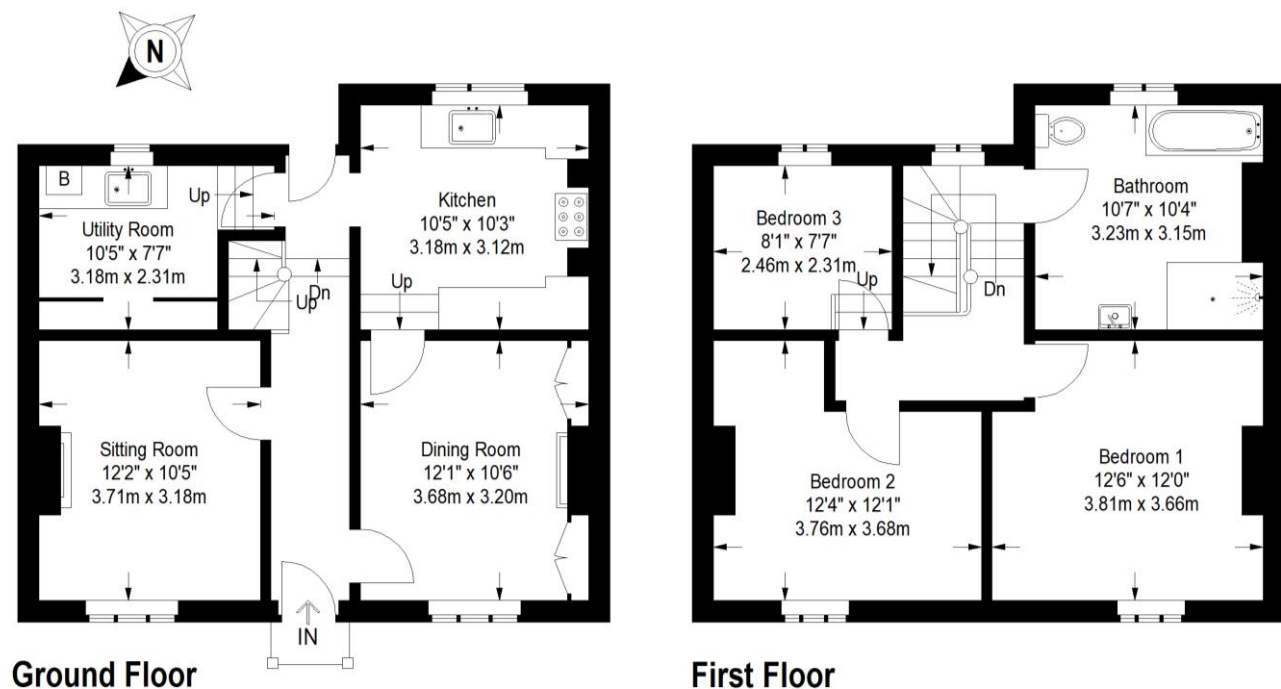


7 Windsor Street,
Cheltenham, Gloucestershire GL52 2DG



A spacious double-fronted period townhouse offering well-presented accommodation over two floors and a 29'x24' rear garden. Entrance hall, 2 reception rooms, kitchen, utility room, 3 bedrooms, and large bathroom.



Offering well-proportioned accommodation arranged over two floors and displaying many features. The property is located in a popular residential district north of Cheltenham town centre and close to Pittville Park.

The front door opens into an entrance hall off which is a sitting room and a dining room. To the rear are a kitchen and a useful utility room. A door from the hall leads into an enclosed rear garden (c.29'x24') with lawn and flower bed borders.

Upstairs on the first floor is a split landing with three bedrooms and a well-appointed bathroom with shower, bath basin and W.C.

ACCOMMODATION:
Entrance hall, sitting room, dining room, kitchen, utility room, three bedrooms bathroom and a 29'x24' rear garden.

ADDITIONAL:
Gas fired central heating to radiators.
Unfurnished.
On-street car parking.
No Sharers.
No smokers.

INCLUDED:
6 ring range & oven.
Dishwasher.
Refrigerator/freezer.
Washing machine.

TERM:
12 months minimum.

AVAILABLE:
Now

GENERAL:
Services: All mains services are believed to be connected.
Local Authority: Cheltenham Borough Council.
Council Tax: C
EPC: D



7 Windsor Street, Cheltenham, Gloucestershire GL52 2DG
Approximate Gross Internal Area 1073 sq ft / 99.7 sq m

These particulars, whilst believed to be accurate are set out as a general outline only for guidance and do not constitute any part of an offer or contract. Intending purchasers should not rely on them as statements or representation of fact, but must satisfy themselves by inspection or otherwise as to their accuracy. We have not carried out a detailed survey nor tested the services, appliances and specific fittings. Room sizes should not be relied upon for carpets and furnishings. The measurements given are approximate. No person in this firm's employment has the authority to make or give any representation or warranty in respect of the property.

readmaurice

48 Andover Road, Cheltenham GL50 2TL
Tel: 01242 241122
Email: post@readmaurice.co.uk
www.readmaurice.co.uk