

# 58 St James Walk

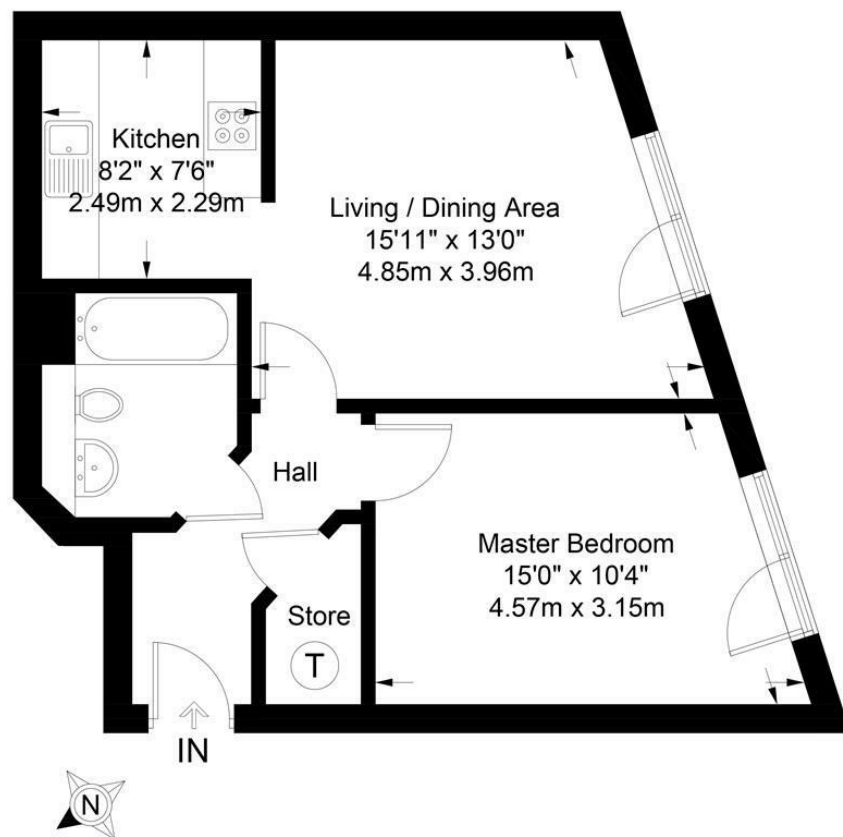
Honeybourne Way Cheltenham Gloucestershire GL50 3UB

readmaurice 





**AN IMPRESSIVE ONE BEDROOM THIRD FLOOR FLAT OFFERING STYLISH AND SPACIOUS MODERN INTERIORS WITH A WELL-APPOINTED CONTEMPORARY KITCHEN AND BATHROOM FITTINGS AND ALL OF THIS IN A GREAT LOCATION CLOSE TO THE AMENITIES OF CENTRAL CHELTENHAM.**



Approximate Gross Internal Area = 505 sq ft / 46.9 sq m

Illustration for identification purposes only, measurements are approximate and are not to scale.  
Please check all details before making any decisions reliant upon them.  
Copyright Read Maurice. (ID394108)

**ACCOMMODATION:**

Entrance Hall with large storage cupboard  
Semi open plan kitchen & living space  
Double bedroom  
Bathroom

**PARKING:**

Allocated parking space

**ADDITIONAL:**

Electric heating  
Double glazed windows.  
Unfurnished.  
Available now.

**INCLUDED:**

Fridge freezer  
Oven  
Electric Hob  
Extractor hood

**TERM**

12 months minimum term. No pets permitted in the development.

**VIEWING AND SHOWING TIMES:**

Read Maurice show our rental property during weekdays only. No application may be made without a physical viewing of the property. For certain properties block viewings will be offered and you are advised to attend at the earliest opportunity if this property is of interest to you.

**GENERAL:**

Mains services are believed to be connected except gas

**Local Authority:** Cheltenham Borough Council

**Council Tax:** A

**EPC:** Band C

**Rating:** 75

**readmaurice** 

48 Andover Road, Cheltenham, GL50 2TL

Tel: 01242 241122

Email: [post@readmaurice.co.uk](mailto:post@readmaurice.co.uk)

[www.readmaurice.co.uk](http://www.readmaurice.co.uk)

**58 St James Walk Honeybourne Way Cheltenham Gloucestershire GL50 3UB**

These particulars, whilst believed to be accurate are set out as a general outline only for guidance and do not constitute any part of an offer or contract. Intending purchasers should not rely on them as statements or representation of fact, but must satisfy themselves by inspection or otherwise as to their accuracy. We have not carried out a detailed survey nor tested the services, appliances and specific fittings. Room sizes should not be relied upon for carpets and furnishings. The measurements given are approximate. No person in this firm's employment has the authority to make or give any representation or warranty in respect of the property. Purchasers should not rely on room labels they are chosen by the floor planner and may not have the deemed planning consent for such use.