



Flat 4 Hazelhurst 24 Eldorado Road, Cheltenham, Gloucestershire, GL50 2PT

Flat 4 Hazelhurst 24 Eldorado Road, Cheltenham, Gloucestershire, GL50 2PT

A MODERN TWO BEDROOM APARTMENT IN SUPERB CONDITION SET IN THIS ATTRACTIVE LEAFY SUBURB OF LANSDOWN MOMENTS FROM THE TRAIN STATION AND AN EASY LEVEL WALK TO MONTPELLIER.

Hazelhurst is a purpose built development of apartments and No. 4 is positioned on the first floor apartment and is spacious in design. It will be found in excellent order. On entering the building the clean and tidy communal hall provides access up to the apartment via low rise stairs.

The master bedroom has built wardrobes and an en suite shower room. Bedroom 2 is also a good size. The guest bathroom has a bath with shower over.

At the rear is a mature communal garden for the residents to enjoy with mature handsome oak trees and planted seasonal flowers. An ideal place to enjoy a sit down after work.

ACCOMMODATION:

Smart entrance hall
Large open plan living space & fitted kitchen
Two double bedrooms
Ensuite shower room

PARKING:

Allocated parking for 1 car and permit parking available Cheltenham Railway Zone 14

ADDITIONAL:

Gas fired central heating
Double glazed windows.
Unfurnished

INCLUDED:

Fridge freezer
Washing machine
Dishwasher
Gas hob
Electric oven

TERM

12 months minimum term. No pets. No smokers. No sharers.

VIEWING AND SHOWING TIMES:

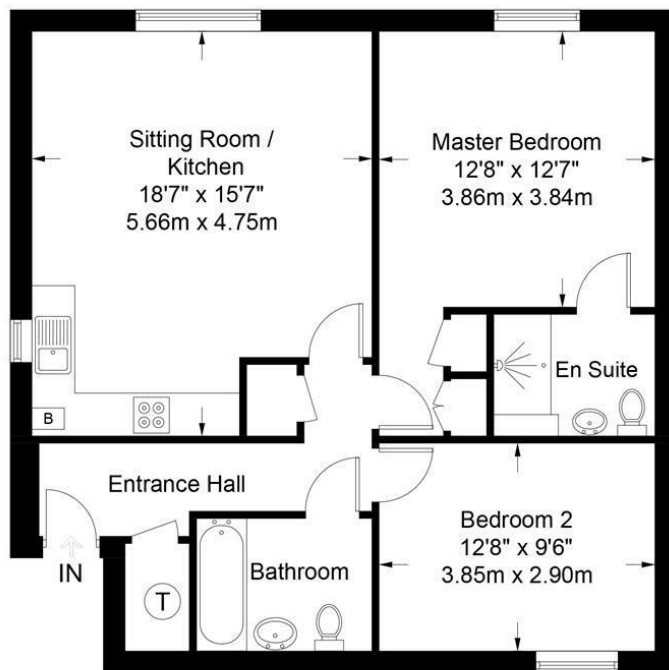
Read Maurice show our rental property during weekdays only. No application may be made without a physical viewing of the property. For certain properties block viewings will be offered and you are advised to attend at the earliest opportunity if this property is of interest to you.

GENERAL:

Mains services are believed to be connected.







Approximate Gross Internal Area = 786 sq ft / 73.1 sq m

Illustration for identification purposes only, measurements are approximate and are not to scale.
Please check all details before making any decisions reliant upon them.
Copyright Read Maurice. (ID1049599)



EPC: Band B

Rating: 81

Council Tax: C

Area: 786.00 sq ft

readmaurice 

48 Andover Road, Cheltenham, GL50 2TL

Tel: 01242 241122

Email: post@readmaurice.co.uk

www.readmaurice.co.uk

Flat 4 Hazelhurst 24 Eldorado Road, Cheltenham, Gloucestershire, GL50 2PT

These particulars, whilst believed to be accurate are set out as a general outline only for guidance and do not constitute any part of an offer or contract. Intending purchasers should not rely on them as statements or representation of fact, but must satisfy themselves by inspection or otherwise as to their accuracy. We have not carried out a detailed survey nor tested the services, appliances and specific fittings. Room sizes should not be relied upon for carpets and furnishings. The measurements given are approximate. No person in this firm's employment has the authority to make or give any representation or warranty in respect of the property. PRN: 19184182 - Date of printing 21st July 2025